



Cal/OSHA, DOT HAZMAT, EEOC, EPA, HAZWOPER, HIPAA, IATA, IMDG, TDG, MSHA, OSHA, and Canada OHS Regulations and Safety Online Training

Since 2008

This document is provided as a training aid
and may not reflect current laws and regulations.

Be sure and consult with the appropriate governing agencies
or publication providers listed in the "Resources" section of our website.

www.ComplianceTrainingOnline.com



[Facebook](#)



[LinkedIn](#)

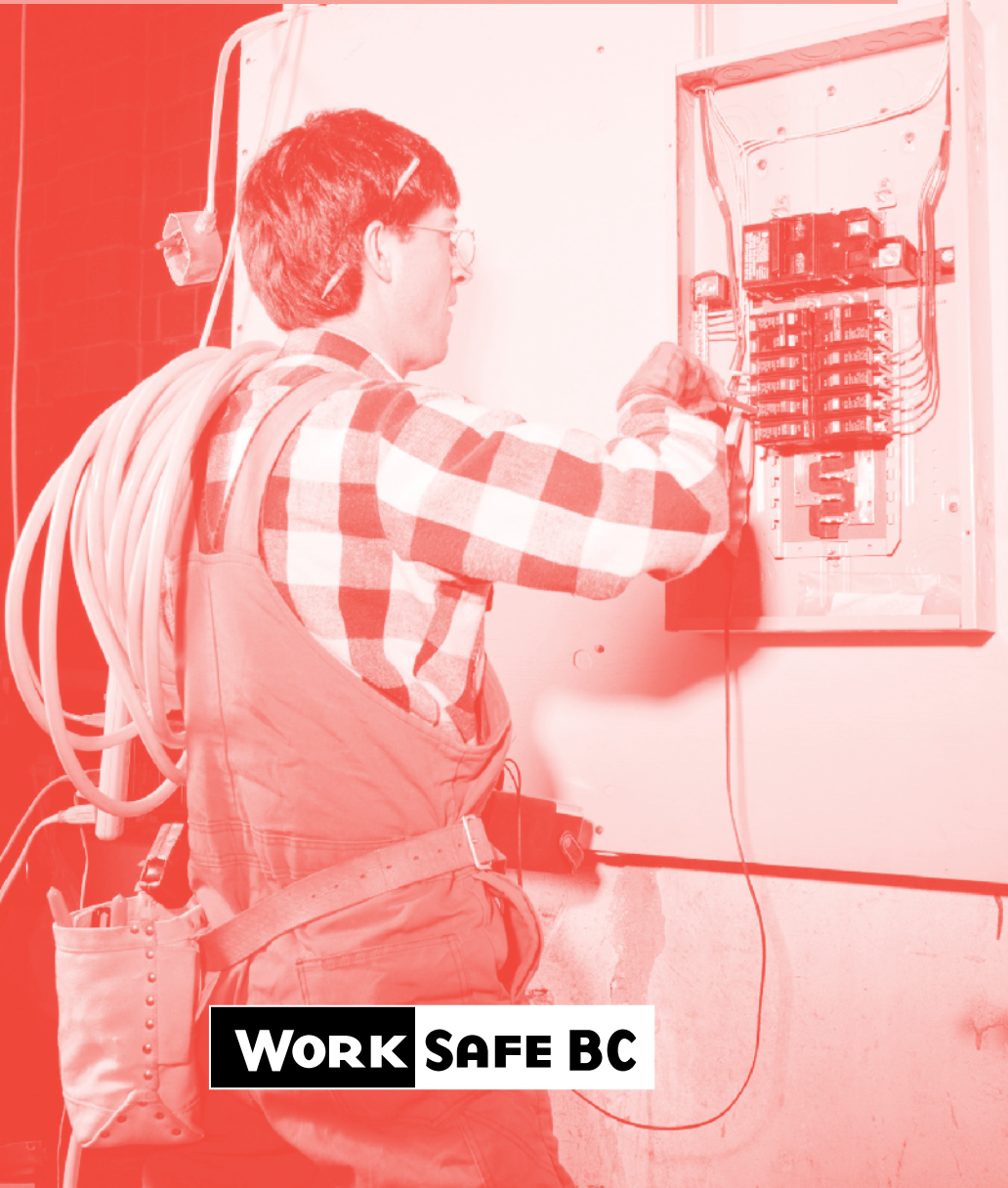


[Twitter](#)



[Website](#)

WORKING SAFELY AROUND ELECTRICITY



WORK SAFE BC

About WorkSafeBC

WorkSafeBC (the Workers' Compensation Board) is an independent provincial statutory agency governed by a Board of Directors. It is funded by insurance premiums paid by registered employers and by investment returns. In administering the *Workers Compensation Act*, WorkSafeBC remains separate and distinct from government; however, it is accountable to the public through government in its role of protecting and maintaining the overall well-being of the workers' compensation system.

WorkSafeBC was born out of a compromise between B.C.'s workers and employers in 1917 where workers gave up the right to sue their employers or fellow workers for injuries on the job in return for a no-fault insurance program fully paid for by employers. WorkSafeBC is committed to a safe and healthy workplace, and to providing return-to-work rehabilitation and legislated compensation benefits to workers injured as a result of their employment.

WorkSafeBC Prevention Information Line

The WorkSafeBC Prevention Information Line can answer your questions about workplace health and safety, worker and employer responsibilities, and reporting a workplace accident or incident. The Prevention Information Line accepts anonymous calls.

Phone 604.276.3100 in the Lower Mainland, or call 1.888.621.7233 (621.SAFE) toll-free in British Columbia.

To report after-hours and weekend accidents and emergencies, call 604.273.7711 in the Lower Mainland, or call 1.866.922.4357 (WCB.HELP) toll-free in British Columbia.

BC Hydro Public Safety Information

www.bchydro.com/safety

For information on overhead power line voltage or to complete WorkSafeBC form 30M33, call the BC Hydro Electric Service Coordination Centre at 1.877.520.1355.

Before you dig, call BC One Call at 1.800.474.6886 or *6886 on your cell.

In case of electrical contact

Is there an immediate threat to life or a fire?

- Yes — Call 911. They will contact BC Hydro to shut off the power.
- No — Call 1.888.POWERON (769.3766), or *49376 on your cell, to have BC Hydro shut off the power.

WORKING SAFELY AROUND ELECTRICITY

WORK SAFE BC

WorkSafeBC publications

Many publications are available on the WorkSafeBC website. The Occupational Health and Safety Regulation and associated policies and guidelines, as well as excerpts and summaries of the *Workers Compensation Act*, are also available on the website: worksafebc.com

Some publications are also available for purchase in print:

Phone: 604.232.9704

Toll-free phone: 1.866.319.9704

Fax: 604.232.9703

Toll-free fax: 1.888.232.9714

Online ordering: worksafebc.com and click on Publications;
follow the links for ordering

2014 edition

ISSN 1496-6476

© 2001, 2002, 2008, 2009, 2012, 2014 Workers' Compensation Board of British Columbia. All rights reserved. The Workers' Compensation Board of B.C. encourages the copying, reproduction, and distribution of this document to promote health and safety in the workplace, provided that the Workers' Compensation Board of B.C. is acknowledged. However, no part of this publication may be copied, reproduced, or distributed for profit or other commercial enterprise, nor may any part be incorporated into any other publication, without written permission of the Workers' Compensation Board of B.C.

About this guide

Electricity can be our best friend — or our worst enemy. When handled improperly, electricity can injure or kill. Injuries can range from shock to severe burns. Injuries and fatalities can occur from accidents involving low voltages or from high voltages, usually from contact with high-voltage power lines.

What do *low voltage* and *high voltage* mean?

According to the Regulation, *low voltage* means “a potential difference (voltage) from 31 to 750 volts inclusive, between conductors or between a conductor and ground.”

High-voltage means “a potential difference (voltage) of more than 750 volts between conductors or between a conductor and ground.”

This booklet explains the dangers of working around and on energized low-voltage equipment and near high-voltage conductors. It is written for supervisors and workers who work around and with electrical equipment and near power lines, and who are familiar with the basic hazards of electrical contact.

If you are a painter or equipment operator, you may work around electrical equipment and conductors but may not be familiar with all the hazards of electrical contact. **This booklet is not a training manual if this is the case.** You should follow up with your supervisor or WorkSafeBC for more information on how the hazards and safety steps outlined in this booklet apply to your work conditions. All workers must be informed of potential electrical hazards before being allowed to work near energized electrical conductors or equipment.

Arc flashes

You don't have to be physically touching energized equipment or a power line to be seriously injured or killed. Electricity can “jump” through the air, which is known as arcing. Arc flashes can occur when there is an electrical fault and energized conductors are short-circuited or grounded. Arc flash burns are the most common electrical injury. Arc flashes can kill at a distance of 3 m (10 ft.)

This booklet has three parts:

- Part 1 describes the dangers of contact with low-voltage electricity, common problem areas, and safe work practices.
- Part 2 describes the dangers of contact with high-voltage electricity and provides guidelines for working safely near power lines.
- Part 3 describes electrical injuries and first aid.

This booklet provides an overview of key electrical hazards. It is not intended as a guide to performing electrical work. Electrical workers must be familiar with the codes and regulations that cover power lines, electrical equipment, and installation in more detail. **If you install, alter, or maintain electrical equipment, you must be qualified to carry out the work, as required by the *Safety Standards Act* and the regulations made under it.**

This booklet does not replace the Occupational Health and Safety Regulation. Refer to the Regulation, especially Part 19: Electrical Safety, for specific requirements.

Acknowledgments

This booklet was made possible with the generous help of many people and organizations who are concerned about electrical safety. WorkSafeBC thanks the following organizations and their representatives who helped compile the information in the first edition of this booklet:

- BC Hydro, Corporate Safety
- British Columbia Institute of Technology, School of Electrical and Electronics Trades
- Electrical Contractors Association of B.C.
- Electrical Industry Training Institute Ltd. (EITI)
- Electrical Safety Branch, Safety Engineering Services, Ministry of Municipal Affairs

WorkSafeBC wishes to thank BC Hydro for permission to include “3 Keys of Electrical Safety” on pages 45 and 46 and for consultation on the graphics and text in the high-voltage section.

WorkSafeBC gratefully acknowledges the many other individuals who reviewed and gave input on the draft of this revised edition.

Contents

Part 1: Low-Voltage Electrical Safety

Low-voltage systems.....	3
Identifying low-voltage overhead conductors	3
Why energized low-voltage systems are dangerous.....	5
De-energization and lockout	7
Working on energized equipment	9
Personal protective equipment and clothing.....	10
Flame-resistant clothing	12
Common problem areas	13
Lighting circuits (347 volts).....	13
Checking voltages with a meter	14
Working alone	16
Storage batteries.....	16
Ladders and other long tools or equipment.....	17
Low-voltage sections of unit substations	17
Working near low-voltage overhead lines	18
Portable electrical equipment and extension cords.....	18

Part 2: High-Voltage Electrical Safety

High-voltage systems.....	23
Identifying high-voltage overhead conductors	23
Why energized high-voltage systems are dangerous	25
Step potential	27
Touch potential.....	29
Safety in the event of power line contact	30
Workers in a vehicle or mobile equipment	30
Rescue work around power lines.....	31
General limits of approach	32
Working inside the limits of approach	34

Common problem areas	36
Construction sites near power lines	36
Mobile equipment near power lines	37
Travelling under power lines	40
Pruning or falling trees near power lines	41
Scaffolds and other equipment near power lines	42
Utility poles	43
Underground utilities	43
3 keys of electrical safety	45
1. Look up and down	45
2. Keep back — Know your limits	45
3. Stay back, and call for help	45

Part 3: Electrical Injuries

Types of electrical injuries	49
Burns	50
Electric shock	51
Eye injuries	53
First aid	54

A red-tinted photograph of an electrician working on a panel. The electrician is wearing a plaid shirt, safety glasses, and a tool belt. A large red number '1' is overlaid on the right side of the image.

1

Low-Voltage Electrical Safety

Low-voltage systems

Low-voltage electrical systems serve most homes and commercial buildings. Every day, hundreds of workers in British Columbia work safely on and around low-voltage electricity. Small or large, the job is usually handled without incident. Occasionally, however, something goes horribly wrong — an unexpected hazard is overlooked and a worker becomes the victim of a sudden explosion or a serious shock.

This part explains why energized low-voltage systems are dangerous and outlines the basic steps to de-energize and lock out equipment. This part also describes the hazards that are often overlooked when working on or around low-voltage systems. It tells you what to look for and how to avoid accidents.

Qualified person

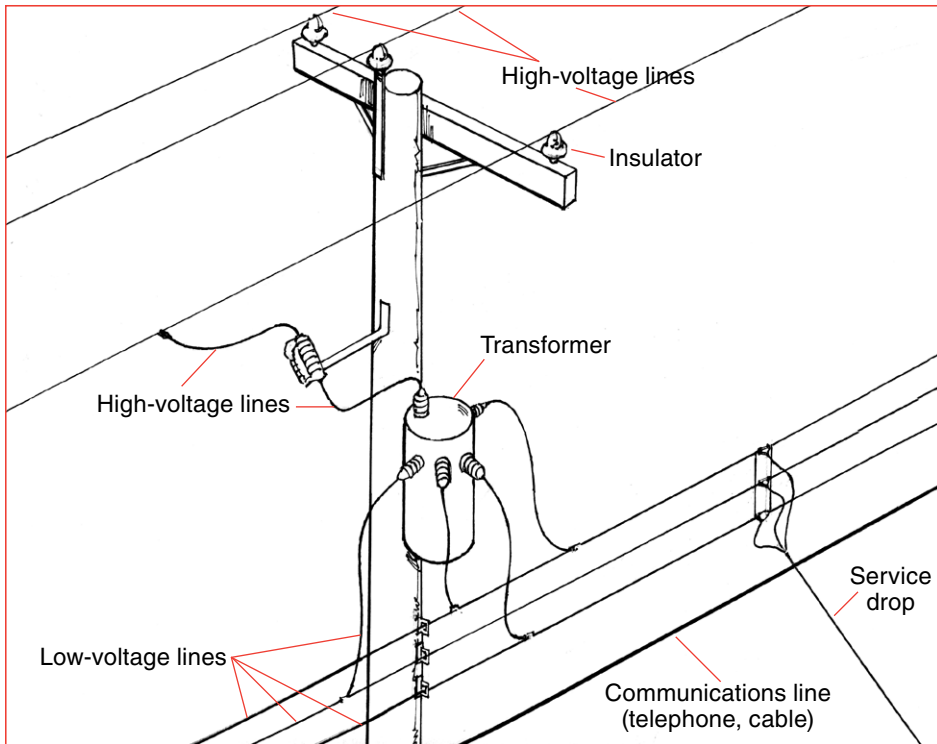
The *BC Electrical Code*, as adopted under the Electrical Safety Regulation, defines a qualified person as “one familiar with the construction and operation of the apparatus and the hazards involved.” For more specific information on who is qualified to do or supervise electrical work and testing, consult the Electrical Safety Regulation or contact the BC Safety Authority.

Identifying low-voltage overhead conductors

Utility poles generally carry both low-voltage and high-voltage conductors (power lines), as well as communications lines, such as cable television and telephone. High-voltage conductors are always installed at or near the top of the utility pole. Low-voltage conductors are usually installed as single conductors mounted one above the other (see illustration on page 4).

If there is a transformer on the pole, lines from the high-voltage conductors feed the transformer, which reduces the voltage for distribution through low-voltage lines to homes (120/240 V) and commercial and light industrial buildings (typically 347/600 V). Electricity travels through the low-voltage distribution lines to the service drop (located on the building), taking power to individual customers.

Employers are responsible for accurately determining the voltage of all power lines in the work area.



You can often identify overhead electrical conductors by their placement on the pole.

Abbreviations

This booklet uses the following abbreviations:

A	ampere
mA	milliampere
V	volt
kV	kilovolt (1 kV = 1,000 volts)
kVA	kilovolt ampere

Why energized low-voltage systems are dangerous

People often think that low-voltage contact is much less dangerous than high-voltage contact. They may believe that a mistake made while working on a low-voltage system means only a quick flash and the tripping of a circuit breaker. This is a common misunderstanding.

There are more injuries from low-voltage systems (especially 347 V systems) than there are from high-voltage systems. An electrical current through your heart can cause an irregular heartbeat or a heart attack. Electric shock can also cause your muscles to contract and may prevent you from releasing your grip, thus extending your exposure to the current. In some instances, low-voltage contact can cause serious shock and burn injuries and even death. See “Types of Electrical Injuries,” pages 49–53.

Two factors can make energized low-voltage equipment extremely hazardous. First, the small working clearances between low-voltage components leave little room for error when using tools.

Second, low-voltage equipment in some industrial services may be supplied by an electrical system that can feed incredible amounts of energy into a fault (caused by a short-circuit, for example). In such cases, a fault can cause an intense, persistent, and rapidly expanding arc of electrical energy to build in a split second. This energy is released suddenly in a restricted space. The flames can cause terrible burns on anyone within the arc’s range, which may reach up to 3 m (10 ft.). Arcs of this kind often leave the electrical structure a charred and melted wreck — stark evidence of the intense heat generated, which can be several thousand degrees.

Almost all voltages are potentially dangerous because of the shock hazard. With low voltages fed by high-capacity transformers, the danger of arc-flash burns is an additional hazard that can cause serious injuries.

As well as causing fire, the heat from an arc can melt solids, vaporize liquids, and expand gases. This results in a huge buildup of pressure, which causes an arc blast. The blast can throw workers across a room, destroy equipment, and hurl objects and pieces of metal onto nearby workers. In some tests, the noise from an arc blast reached 140 decibels.

Working near energized equipment

Uninsulated, energized parts of low-voltage electrical equipment and conductors must be guarded by approved cabinets or enclosures unless the energized parts are in a suitable room or enclosed area that is accessible only by qualified and authorized persons.

Each entrance to a room or other guarded location containing uninsulated and exposed energized parts must be marked with warning signs limiting entry.

If uninsulated, energized parts are not guarded with approved cabinets or enclosures:

- Suitable barriers or covers must be provided if a worker unfamiliar with the hazards is working within 1 m (3.3 ft.) of those parts **or**
- The worker must be informed of the potential hazards and must follow written safe work procedures



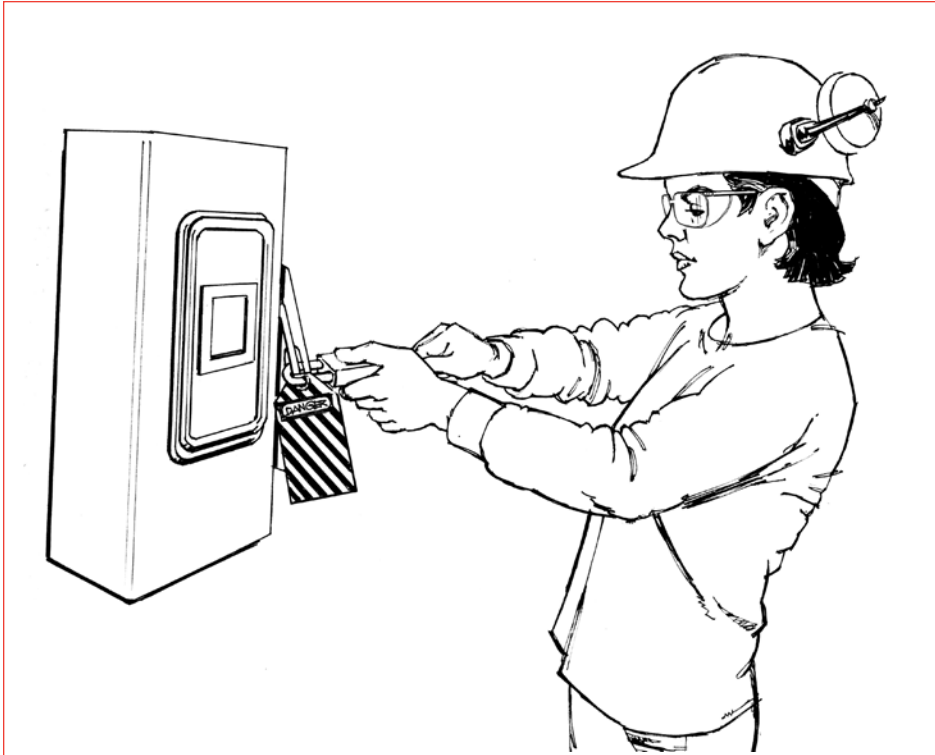
De-energization and lockout

Because of the hazards of working on energized low-voltage equipment, the first choice is to de-energize and lock out the equipment before doing maintenance work on it. De-energization and lockout prevents the release of energy that could cause injury or death. Locks are used to make sure no one accidentally turns on equipment while workers are performing maintenance on it.

Maintenance is any work that keeps machinery or equipment in a safe operating condition. This includes installing, repairing, cleaning, and lubricating equipment, as well as clearing obstructions to the normal flow of material.

As a worker, you must follow your employer's safe work procedures to de-energize and lock out equipment. At a minimum, a procedure should include the following five steps:

1. Identify the machinery or equipment that needs to be locked out.
2. Shut off the machinery or equipment. Make sure all moving parts have come to a complete stop. Also make sure the act of shutting off equipment does not cause a hazard to other workers.
3. Identify and deactivate the main energy-isolating device (for example, a switch or valve) for each energy source. There may be more than one source of power, such as backfeed from the load side or control voltage from a separate source.
4. Apply a personal lock to the energy-isolating device for each energy source. Ensure that all parts and attachments are secured against inadvertent movement. Each worker must apply a personal lock unless you are following a group lockout procedure.
5. Test the lockout to make sure it's effective and to verify that all live components have been de-energized. First, ensure that all workers are in the clear and that no hazard will be created if the lockout is not effective. You can test lockout after each energy-isolating device is locked out or after a group of nearby devices is locked out.



Apply a lock to the electrical disconnect switches before working on the equipment.

Safe work procedures for work on electrical equipment should include the following:

- Steps to ensure that all work has been completed on a circuit before it is connected to the power source
- Who is qualified to test electrical circuits
- What types of testing devices are acceptable

Lockout requirements

For more information on lockout, see the following:

- Occupational Health and Safety Regulation, Part 10: De-energization and Lockout
- *Lockout* (WorkSafeBC publication)

Working on energized equipment

For most work, you must de-energize electrical equipment because there is a high risk of injury when working on energized equipment. It may be possible to schedule such work outside of normal work hours to limit the inconvenience.

Sometimes it is not practicable to completely disconnect low-voltage equipment before working on it. For example, it may be necessary to have equipment running in order to test it or fine-tune it. In such cases, the work must be performed by workers who are qualified and authorized to do the work. They must follow written safe work procedures.

You should observe the following general precautions when working on energized equipment (but note that these are not a substitute for proper training and written safe work procedures):

- **Think ahead.** Assess all of the risks associated with the task. Plan the whole job in advance so you can take every precaution, including arranging for help in case of paralyzing shock. Consider holding a pre-job safety meeting to discuss the job with all workers before starting the work.
- **Know the system.** Make sure accurate, up-to-date information is available to everyone working on the system.
- **Limit the exposure.** Expose live parts for as little time as necessary. *This does not mean you should work hastily.* Be organized so you can do the job efficiently.
- **Cover exposed live metal.** Use insulating barriers or shields to cover live parts.
- **Cover grounded metalwork.** Cover grounded metal parts with insulating material as much as possible.
- **Limit the energy to reduce the risk.** Take all practical steps to ensure the fault current at the point of work is kept as low as possible while the work is in progress. For example, when measuring voltage, do it on the load side of the circuit-protective devices with the smallest current rating. Current-limiting devices can be used to reduce the risk of an arc flash.
- **Remove metal rings, bracelets, and wristwatches.** These could cause a short-circuit if there are small clearances. If it is necessary to wear MedicAlert bracelets, secure them with transparent surgical tape, adhesive tape, or rubber bands.

- **Use one hand and turn your face and body to the side when operating a safety switch.** Limit possible injuries by not placing body parts directly in front of energized equipment when there is danger of an arc flash.
- **Avoid electrical contact when working in awkward positions.** If you must work in an awkward or unbalanced position and reach with your tools, use insulating cover-up material on the tools to avoid contact with live conductors.
- **Use the correct equipment and clothing.** See “Personal Protective Equipment and Clothing.”

Regulation requirements

If you must work on energized low-voltage equipment, see the following requirements in the Regulation:

- Sections 8.14–8.18, Eye and Face Protection
- Section 8.22, Footwear
- Section 8.31, Flame Resistant Clothing
- Section 19.10, Disconnection and Lockout

Personal protective equipment and clothing

Employers are responsible for providing any specialized personal protective equipment and clothing necessary for work on energized equipment. Supervisors must ensure that workers use the clothing and equipment. Workers are responsible for inspecting the equipment before use and for using it properly.

When working on energized equipment, qualified and authorized workers need the following protective equipment and clothing:

- Insulated tools to avoid shocks and prevent accidental short-circuits
- Rubber gloves (or leather gloves for testing equipment)
- Cover-up blankets to avoid accidental contact with live equipment
- Shock-resistant safety boots or shoes (with appropriate CSA symbol)
- Safety glasses, goggles, or a face shield to protect against molten metal or ultraviolet light
- Flame-resistant clothing if there is a risk of an electric arc that could cause a fire

Safety glasses normally used on construction projects to protect against debris are not designed to prevent injuries from the ultraviolet light of an electric arc. If the risk is high, de-energizing must be the first choice. If work has to be done on live equipment, polycarbonate safety glasses are required; however, you should consider using a complete polycarbonate face shield. Polycarbonate glasses will filter out most of the ultraviolet light, and yellow tinted glasses will filter out more blue spectrum light without making it too dark to work. However, even the best safety glasses cannot protect against an electric arc or a fireball.



When working on energized low-voltage equipment, workers need protective equipment, including insulated tools, safety eyewear, rubber gloves, and shock-resistant footwear.

Flame-resistant clothing

If there is a fire hazard, workers must wear flame-resistant clothing. Consider wearing clothing made of flame-resistant cotton or wool blends. The fabric should have a smooth, tightly woven finish.

Avoid clothing made of nylon, polyester acetate, or acrylic fibres. These fabrics are moderately flammable and will melt while burning, causing deep and extensive burns to the skin. Workers should also avoid laminated fabric containing polyurethane sponge because it ignites and burns quickly. Many synthetic materials don't char or ash when they reach ignition temperatures. Instead, they melt and form a hot, tacky residue that sticks to skin and burns the flesh.

HAZARD ALERT

A journeyman electrician was burned when there was an explosion caused by an electric arc. He was installing a 600 V temporary service to a construction site. The high-visibility vest he was wearing caught fire, and the plastic on the vest melted, increasing the severity of his burns.

Although flame-resistant vests are available, most high-visibility vests are not flame-resistant. If there is any danger of a fire or explosion when working with energized equipment, workers should remove clothing that isn't flame-resistant.

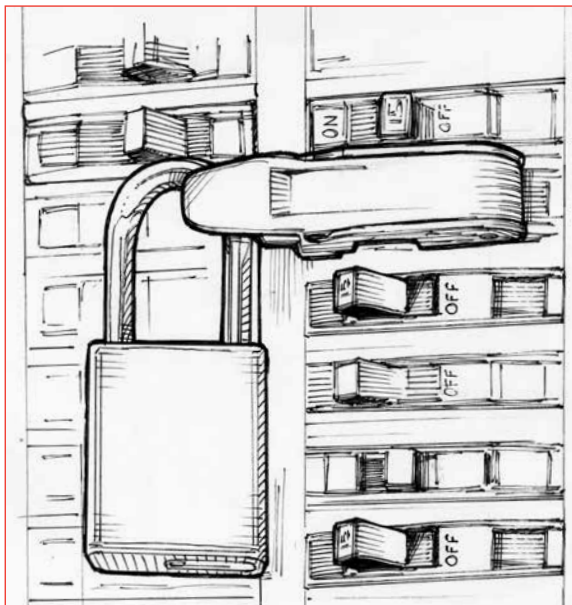
Common problem areas

This section highlights common problem areas and gives examples of actual incidents where workers have suffered injury while working on electrical equipment. It also offers suggestions to help you work safely.

Lighting circuits (347 volts)

With the increasing use of 347/600 V systems in commercial and industrial buildings, lighting at 347 V is common. De-energize and lock out the power supply before working on electrical components. Then test all conductors to ensure de-energization.

Work must not be done on energized parts of electrical equipment connected with lighting circuits operating at more than 250 volts-to-ground without the prior written permission of WorkSafeBC.



Lockout is required at the electrical panel before replacing any part associated with the lighting circuit. When testing lighting circuits, prior written permission is not required from WorkSafeBC as long as you follow established safe work procedures and use CSA-approved test equipment and tools.

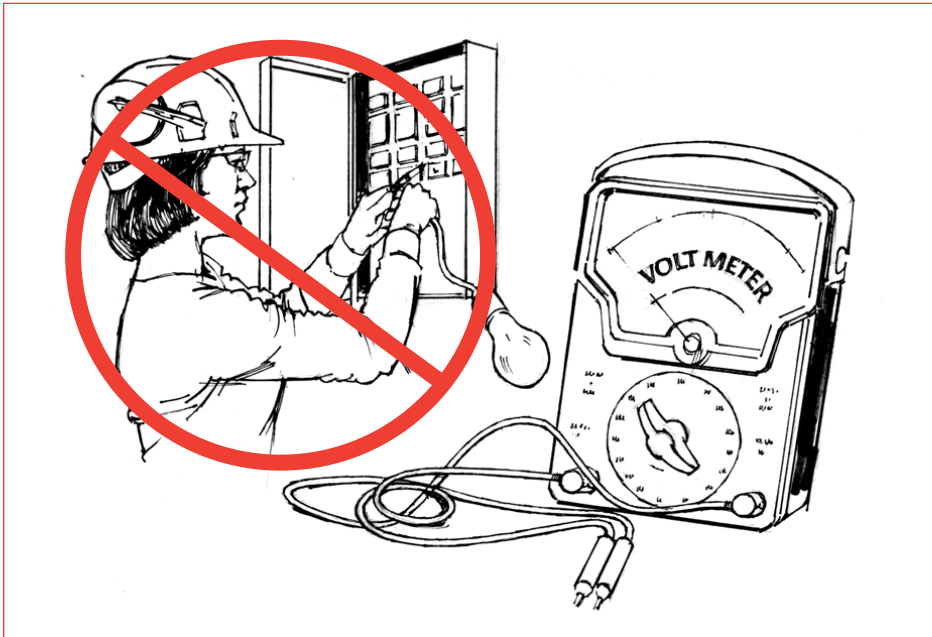
HAZARD ALERT

A worker contacted an energized wire while working on an energized 347 V ballast box above the suspended ceiling. Using safe work procedures, a co-worker pulled him away from the paralyzing contact. Subsequently, one of the worker's fingers had to be amputated. In another similar incident, a worker suffered electric shock and died.

Checking voltages with a meter

In order to check voltages with a meter, you must be qualified and know the hazards. Testing can be dangerous, particularly if someone is unqualified, with little or no electrical experience. For example, you must never use an improvised test lamp, which can cause an electric arc. If you incorrectly connect a meter to measure current rather than voltage, the low resistance of the ammeter could allow an abnormally high current to flow when voltage is checked.

Workers often lean close to equipment to see where to put the test probes. If an electric arc occurs, your face will bear the brunt of the intense heat. You must wear goggles or safety glasses. If there is a high risk, you must use a full-face shield. See page 11 for more information on safety glasses.



Use approved portable meters and leads, not improvised test lamps.

An electric arc may occur in one of the following ways:

- An improvised test probe (for example, a screwdriver blade or bare alligator clips) with more than the necessary exposed metal may create a phase-to-phase or phase-to-ground short-circuit on the closely spaced fuse clips or bus bars of a 600 V panel.

- A screwdriver being used on energized equipment may slip and ground out the live parts.
- A multimeter that is not switched from the ammeter or ohmmeter mode may create a short-circuit across phases when the probes are placed on the conductors to measure voltage. The multimeter may disintegrate if the internal fuse is not designed to protect against this kind of misuse. This, however, is not the worst that can happen. The arcing caused at the test probes can ionize the air, resulting in a fireball. This problem should not occur if testing equipment meets the requirements listed below.

The testing equipment must meet CSA standards or another standard acceptable to WorkSafeBC. Alternatively, acceptable testing equipment must have the following characteristics:

- It has high rupturing capacity fuses or alternative protective circuitry to protect you in case of a fault.
- Measurement ranges are clearly and unambiguously marked.
- The insulation on the instrument leads is in good condition and is rated to the maximum voltage reading of the meter.
- The lead wires are not cracked or broken. They have a current carrying capacity (ampacity) that meets or exceeds the maximum current measurement of the meter.
- There is only a minimum amount of exposed metal at the probe tips to avoid short-circuiting closely spaced live parts.

When checking voltages with a meter, you must use an approved meter and should follow safe work practices, which include the following:

- Set the meter to the correct mode and voltage range. If possible, check its operation on a 120 V convenience outlet (for example, a system with a low available fault current). Multi-range instruments should always be turned off or set to their maximum AC voltage range when not in use.
- Use a single-function meter (voltmeter) rather than a multimeter, if possible.
- Where possible, test on the load side of the fuse or circuit breaker that has the smallest rating.
- Make sure meter leads are connected to the appropriate terminals of the meter for the measurement involved.
- Set the meter at the highest range that will allow for the expected reading to be achieved.

Working alone

Electrical work is often done by someone working alone or in isolation, such as on a rooftop or after regular hours so de-energization does not inconvenience as many workers.

The employer must develop and implement a written procedure for checking the well-being of a worker doing electrical work alone or in isolation. The procedure must include the time interval between checks and the procedure to follow in case the worker cannot be contacted, including provisions for emergency rescue. Someone must be designated to establish contact with the worker at predetermined intervals and at the end of the work shift. The time intervals must be determined in consultation with the worker assigned to work alone or in isolation.

Storage batteries

Some batteries may have a high level of stored energy (for example, batteries in battery-powered vehicles or large banks of storage batteries). Short-circuiting by a ring or wristwatch bracelet can severely burn you, even if no shock hazard exists. The voltage of some battery banks, however, may be high enough to also be a shock hazard.

You must use proper protective equipment for testing, connecting, or disconnecting batteries. To protect against battery acid, use a face shield, plastic apron, and plastic gloves. There must be an eyewash station nearby in case of splashes to the eye. You must use insulated tools (for example, wrenches or screwdrivers).

HAZARD ALERT

A technician was installing a storage battery when his wristwatch contacted the battery terminal. The wristwatch caused the battery to short-circuit, and the worker suffered severe burns to his hands.

Ladders and other long tools or equipment

Workers must not use metal ladders, wire-reinforced wooden ladders, and other long tools or equipment, such as gutters or scaffolding, when working on energized electrical equipment or near energized electrical equipment if there is a possibility of contacting bare energized components.

Low-voltage sections of unit substations

Workers have been injured while replacing components on low-voltage sections of unit substations. Unfortunately, this type of low-voltage section of the switch gear is often close to the supply transformer terminals — a place where there is very little impedance to limit the flow of fault current. If there are a number of loads on a bus bar, the supply transformer may be quite large. The larger the transformer, the larger the current that will pour into a fault. Working on live installations of this kind can be extremely dangerous. De-energizing must be your first approach in such cases.

Some electrical equipment is designed to electrically isolate sections of the unit substations. You can maintain this equipment safely without de-energizing all of it. Consult the manufacturer's instructions and refer to written safe work procedures.

HAZARD ALERT

Two workers were attempting to add a new 400 A switch to the energized 600 V section of a 1,500 kVA power centre. A number of important loads were fed from the low-voltage bus bars where the workers were going to install a new fused switch. They didn't want to inconvenience other operations by de-energizing the other loads connected to the bus bars. Instead of planning a shutdown, they decided to install the switch live because it was "only" low voltage. The workers were severely burned during the installation.

Working near low-voltage overhead lines

Individual buildings such as houses often receive low-voltage electricity from overhead distribution lines and service drops. These lines are usually out of reach. However, workers using a ladder may come close to low-voltage lines — for example, when washing windows or painting. These lines are not insulated well enough for a person to touch them safely. Consider them energized and dangerous.

When a work process, such as window washing or painting, results in a *temporary* encroachment by a worker into the area of low-voltage lines, either of the following must occur:

- Barriers or covers must be provided if a worker unfamiliar with the hazards is working within 1 m (3.3 ft.) of those parts.
- The worker must be informed of the potential hazards and must follow written safe work procedures.

Sometimes there may be a *permanent* change in the building, such as a new stairway or work platform, that allows workers to get near the low-voltage lines. In this case, qualified and authorized workers must reposition or cover the lines with conduit or other approved cover to protect workers from contact.

Portable electrical equipment and extension cords

Portable electrical equipment must be checked to ensure it is approved. Portable power tools and extension cords must be maintained in good repair and be suitable for the conditions where they are being used. For example, the outer jacket of an extension cord may appear undamaged but may conceal a broken ground conductor. Portable electrical equipment must be effectively grounded unless it has double insulation or equivalent protection.

Additional precautions are needed if approved portable electrical equipment is used outdoors or in wet or damp locations. This equipment, including temporary lighting, requires a class A–type ground fault circuit interrupter (GFCI) installed at the receptacle or on the circuit panel unless another means of protection is provided that is acceptable to WorkSafeBC, such as the Assured Grounding Program.

Workers have been electrocuted or badly burned as a result of contact with damaged extension cords. Electrical cords are often left unprotected, stretched across ground in the path of machinery. Over time, these cords become frayed, cut, and damaged from constant use and the pressure of vehicle traffic running over them.

Sometimes wires are left exposed or a cut cord is repaired only with electrical tape. These cords are particularly hazardous when the ground is wet.



Damaged cords can result in serious electrical injuries.

GFCIs and Assured Grounding Programs

A GFCI is a device that detects any leakage current in an electrical circuit and trips (turns off) the circuit whenever the leakage current is greater than 5 milliamperes. GFCIs are required whenever portable electrical equipment is used outdoors or in wet or damp locations. WorkSafeBC allows use of an Assured Grounding Program as an alternative to using GFCIs in such conditions. However, the use of an Assured Grounding Program requires permission from the electrical authority that has jurisdiction in the area.

Using GFCIs

To prevent nuisance tripping of GFCIs, the following safe work practices are recommended:

- Mount GFCI receptacles and GFCI circuit breakers in dry locations. If this is not possible, use portable GFCIs that are rated rainproof.
- Connect only one power tool to each GFCI.
- Cover power tools to protect them from the rain when they are not in use.
- Store power tools and extension cords in a dry location.
- Maintain extension cords and power tools in good condition.
- Use extension cords that are rated for hard usage or better.
- Don't use extension cords longer than 45 m (150 ft.).

Assured Grounding Program

Before an Assured Grounding Program can be used instead of GFCIs, a variance must be obtained from the electrical authority having jurisdiction. The purpose of an Assured Grounding Program is to ensure that the black wires (hot), white wires (neutral), and, in particular, green wires (ground) of extension cords and power tool cords are properly connected. This is done by testing every extension cord and power tool when it is first put into service, following repairs, and every three months.

An Assured Grounding Program has four parts:

1. **Worker training** — All workers using extension cords and power tools under an Assured Grounding Program must be trained on the program.
2. **Daily visual inspection** — Extension cords and power tools must be checked for damage daily by the persons who will be using them. Any damage found must be repaired before the cord or tool is used. Damaged extension cords and power cords of tools must not be spliced. The cords can either be replaced or shortened to remove the damaged portion.
3. **Continuity and polarity testing every three months** — A qualified worker must test every extension cord and power tool for circuit continuity and correct polarity before they are used for the first time, following repairs, and during the months of January, April, July, and October. A qualified worker is a person who has been authorized by a supervisor to perform the task and who has received appropriate training.
4. **Colour-coding extension cords and power tools** — Extension cords and power tools that have been tested must be tagged with a coloured band about 10 cm (4 in.) from the male plug. Coloured electrical tape is suitable for this purpose. A different colour is required for each quarter of the year. The following colours are standard for all worksites using an Assured Grounding Program in B.C.:

Red	January, February, March
White	April, May, June
Blue	July, August, September
Green	October, November, December

As an example, a new extension cord tested on February 8 will have a red tag at the male plug. The extension cord must be retested and marked with a white tag during April.



2 High-Voltage Electrical Safety

High-voltage systems

Working safely around high-voltage conductors is a challenge for many workers in B.C. High-voltage systems are generally associated with utility services and heavy industry, such as pulp mills, sawmills, and mining operations. With care and precise planning, you can operate equipment and tools safely around these potentially lethal power lines.

This part is designed for workers who must work *close* to high-voltage equipment and conductors. It explains why high-voltage systems are dangerous. It lists the minimum distances you must keep away from live power lines and explains what you should do if you can't maintain these limits of approach. It also describes common problem areas and gives safe work practices for working close to overhead lines around construction sites and for operating equipment around power lines.

When this booklet mentions the owner of a power system, keep in mind that B.C. has a number of electrical utilities. BC Hydro is the largest, but there is also FortisBC. Power is also provided by several municipalities, universities, and other corporations.

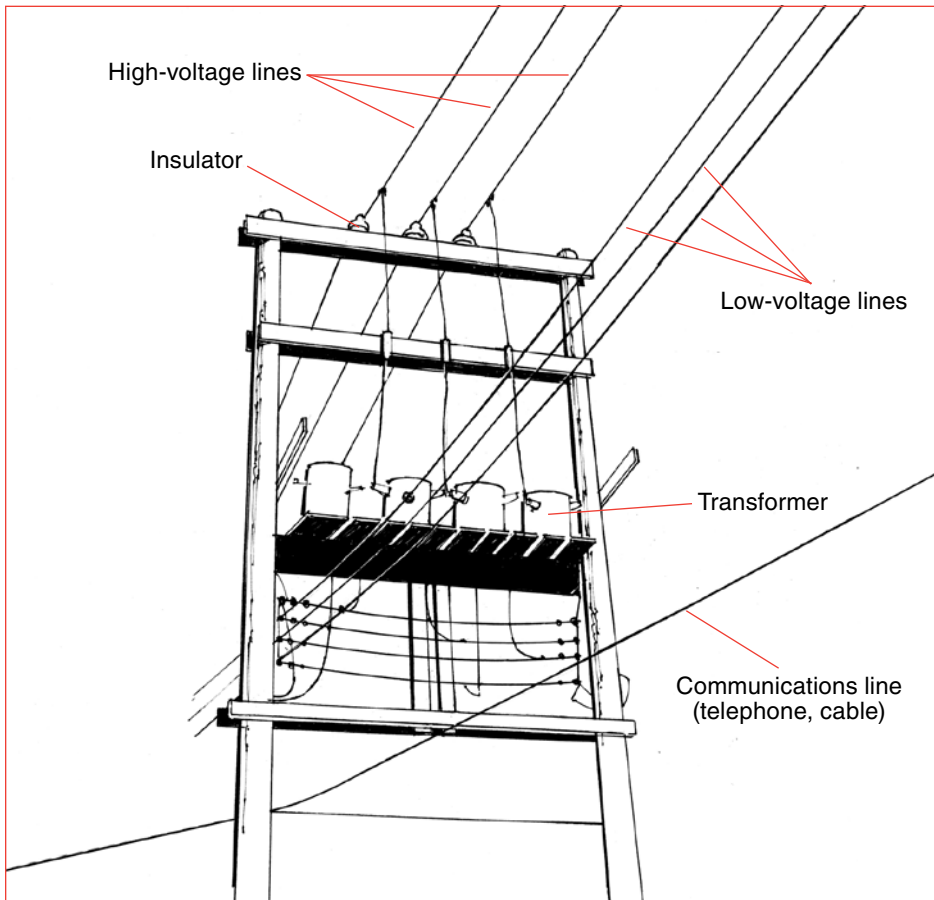
Work on high-voltage systems

This book is not a manual for work on high-voltage systems.

Any work on high-voltage equipment and power systems must be performed by qualified and authorized workers in accordance with written safe work procedures acceptable to WorkSafeBC. Requirements for working on these systems are specified in Part 19 of the Regulation. For isolation and lockout, workers must follow the safe work procedures set out by the employer or owner of the power system.

Identifying high-voltage overhead conductors

Overhead high-voltage conductors are usually installed at the top of utility poles. If there is more than one conductor, they are usually placed side by side on a crossarm. If there is a transformer on the pole, the high-voltage conductors are mounted above it. These are general guidelines. Employers are responsible for accurately determining the voltage of all conductors on the pole or in the work area.



An H-frame configuration may be used to facilitate the installation of transformer bank platforms on older systems. They are most often seen in alleys. The illustration on page 4 shows a common single-pole configuration.

Electrical distribution system

Electricity is transmitted from generating stations and substations via high-voltage transmission lines at 60–500 kV (60,000–500,000 V). These lines are located on top of large towers or poles in transmission rights-of-way. The voltage is reduced at substations in urban areas and distributed by overhead or underground distribution lines. The high-voltage lines on utility poles on our streets are typically at 4–25 kV (4,000–25,000 V).

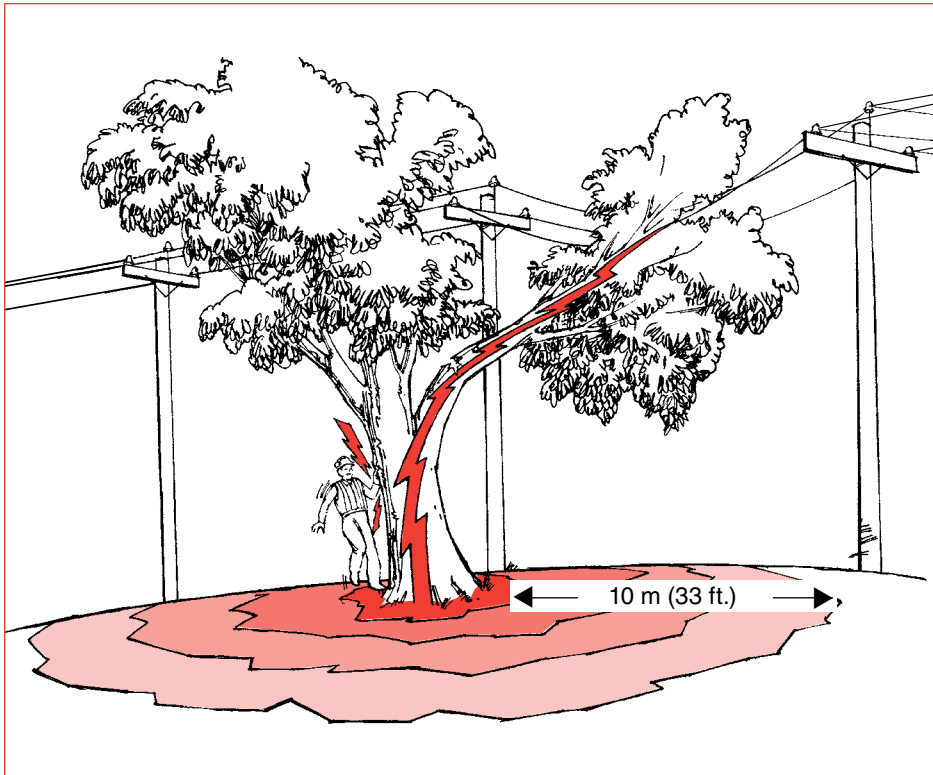
Why energized high-voltage systems are dangerous

Accidents involving high voltages can result in severe injuries and death. When an electric current passes through the body, it generates heat and can extensively damage internal tissues. In some cases, the entry and exit wounds are so severe that a foot or hand has to be amputated. The electric current can also stop the heart. See “Types of Electrical Injuries,” pages 49–53.

Electricity seeks all paths to the ground. That path might include a tree, mobile equipment, or the human body. If a part of the equipment you are operating contacts a live power line, then anything in contact with your equipment will also become energized. The earth itself could become energized for some distance around your unit. Similarly, the ground could become energized if a tree makes contact with a power line or if a broken power line falls to the ground.

When the electrical flow reaches the ground, it spreads out like ripples in a pool of water. The voltage is very high where electrical contact is made with the ground. Farther away from this point, the voltage gradually drops off. Wet ground will extend the distance and the danger.

The voltage at the contact point is approximately the same as the line voltage. With power lines up to and including 60 kV (60,000 V), the voltage drops to zero about 10 m (33 ft.) away from the contact point with the ground. With higher voltages, such as those carried by the lines along transmission rights-of-way, the voltage might not drop to zero until you are as far away as 32 m (105 ft.).

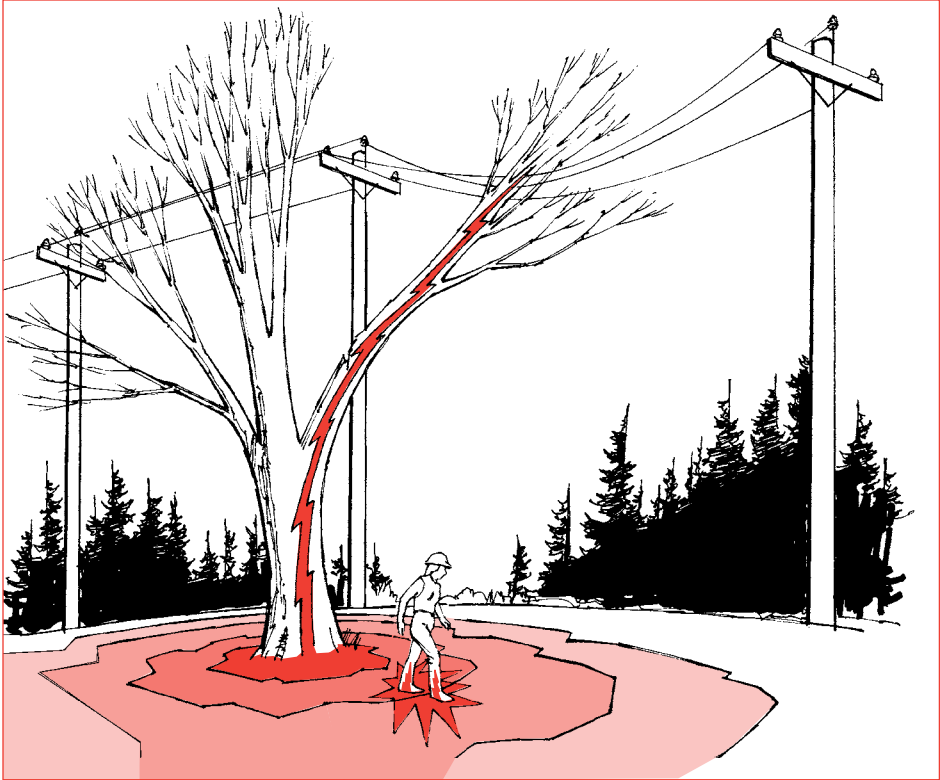


If anything touches a high-voltage power line or if a power line falls to the ground, electricity will flow to the ground, energizing the tree or equipment and anything in contact with it. The surrounding ground may be extremely hazardous. The voltage gradually decreases from the point of contact until it reaches zero. The safe distance shown here — 10 m (33 ft.) — is for line voltages up to and including 60 kV (60,000 V).

Whenever there is a voltage difference between one point and another, a current will flow. It is this flow of electricity (the current) that can cause serious injury or death.

Step potential

Step potential is the voltage difference between two places that are a step apart on energized ground. For example, if you are standing on energized ground, there could be a significant difference in voltage between where one foot and the other are placed, and an electric current could flow up one leg and down the other.

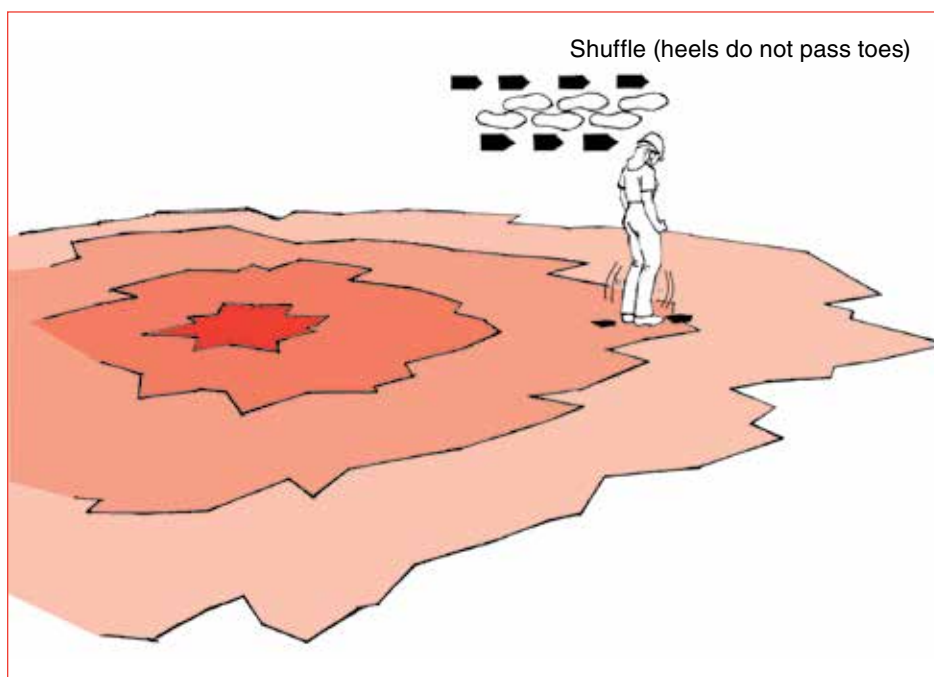


Step potential: If your feet are spread apart on energized ground, electricity can flow through your body from the area of higher voltage to the area of lower voltage.

If your feet are close together and touching, you are fairly safe. Since there is almost no voltage difference between the places where your feet stand, there is little reason for electricity to seek a path through your body.

If you find yourself on energized ground and need to move away, you can avoid electric shock or electrocution because of step potential by making sure there is no space between your feet. Shuffle your feet while moving out of the energized area. When shuffling, keep your feet touching at all times to maintain the same voltage in both feet.

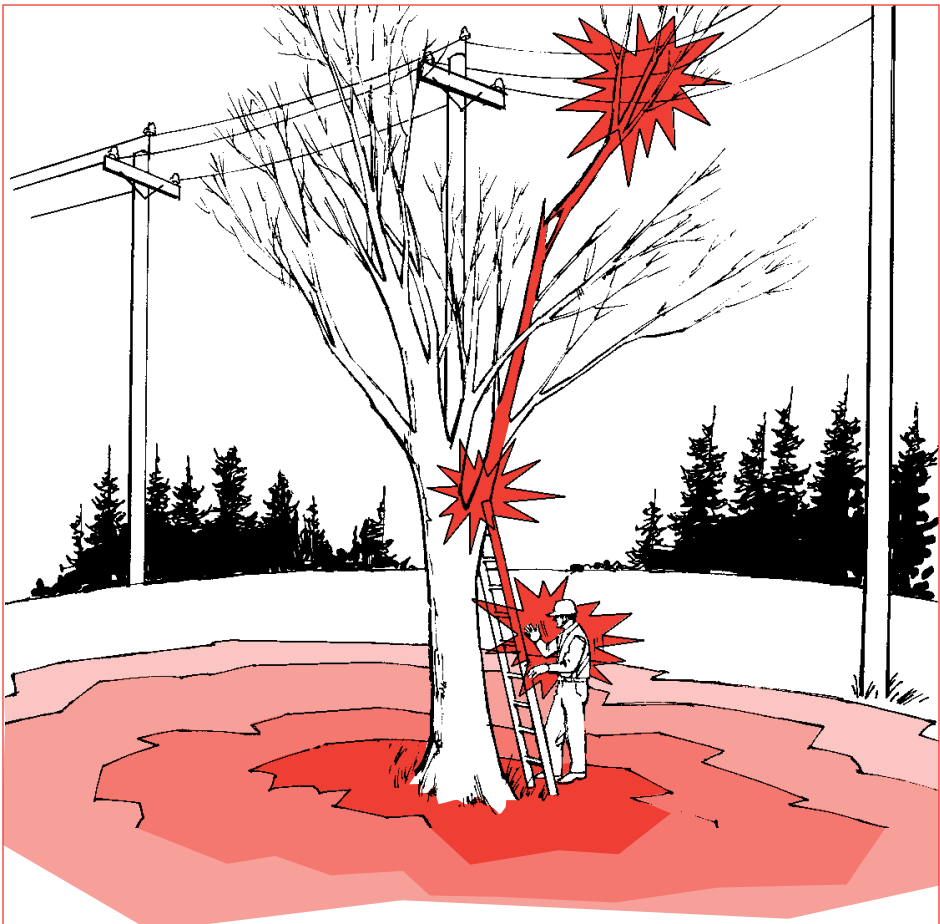
Similarly, rescue workers must not enter an area that might be energized. Anyone trying to reach an injured worker in an energized area would be exposed to the same danger of step potential. The power lines must be de-energized and grounded before rescue workers or first aid attendants approach.



If you must move on energized ground, shuffle while keeping your feet together and touching each other. Don't take steps.

Touch potential

Touch potential is another danger that comes from the difference in voltage. It occurs when you touch something that is energized while standing on lower-voltage ground. For example, if a tree or equipment is in contact with a power line, it will be energized to the same voltage as the power line; the surrounding ground will be energized to a lower voltage. If you touch the energized equipment or tree at the same time as you touch the ground with your feet, electricity will flow through your body from the higher voltage tree or equipment to the lower voltage ground.



Touch potential: Trees and equipment become energized when they contact a power line. Electricity can flow through anyone who touches the energized tree or equipment, often causing serious injury or death.

Safety in the event of power line contact

Power lines can be brought down in a number of situations, including storms, trees, ice, and motor vehicle accidents. Even if the power line does not come down, if it is in contact with a tree, vehicle, or mobile equipment, the ground will be energized and so will the tree, vehicle, or equipment.

Workers in a vehicle or mobile equipment

If electrical contact is made, *stay in the vehicle or mobile equipment if it is safe to do so.*

You are relatively safe inside your vehicle as long as you don't touch or step onto anything outside the vehicle that will provide a path for the current to flow to ground. Wait until the owner of the power system has verified that the power lines have been de-energized and grounded. In one incident, for example, the raised box of a dump truck hit a 60 kV (60,000 V) power line. The driver stayed in the truck and was not injured, although all 18 tires were damaged by the electrical current.

If the vehicle is not damaged and is not entangled with the power line, it is safe to drive slowly out of the energized area, at least 10 m (33 ft.) clear of the wires and any wet ground. Because of the danger of exploding tires, large mobile equipment with inflated rubber tires should be moved to an open space away from workers and other equipment. There is a danger of exploding tires for up to 24 hours.

If you must abandon your vehicle because of an emergency such as a fire, be aware that the ground below your machine may be energized and use *extreme caution*.

To make a safe escape, keep both feet together and hands by your sides, and make a short jump from your vehicle. The goal is to ensure that your entire body clears the vehicle and that you land on your feet without stumbling. Don't allow any part of your body to touch the vehicle while you are touching the ground.

Don't take steps away from the vehicle. It is safest to *shuffle* away without moving your feet more than a few centimetres (a couple of inches) at a time. Keeping your feet together will ensure that you don't straddle two zones with different voltages.

Rescue work around power lines

The main role for rescue workers near downed power lines or energized equipment is to stop people from getting hurt. Here are some safe work practices:

1. **Treat downed lines and anything in contact with a power line as energized.** Energized wires seldom leap about and give off sparks, so you have no way of knowing whether or not they are energized. Even if the line is not energized, automatic switching equipment may restore power to the line without warning.
2. **Park well clear.** When you arrive at the scene, park your vehicle well away from any downed lines. At night, shine a flashlight through the window to make sure you are not parked anywhere near a downed power line.
3. **Stop traffic and keep people clear.** Workers on foot or in vehicles may not see lines that are lying on the ground. The ground surrounding a downed line will be energized. If a live wire comes in contact with a vehicle, or anything else, that object becomes energized. Secure the area and keep everyone back at least 10 m (33 ft.) — more if the voltage is over 60 kV (60,000 V).
4. **Don't let yourself become a victim.** Regardless of how badly someone is injured, you cannot help if you are electrocuted. Never touch anything that is in contact with a downed power line, including injured or trapped victims, puddles, vehicles, or trees. Don't use a dry stick or piece of rope or hose as they will not offer any protection. Don't enter an area that might be energized.
5. **Call the owner of the power system and 911 (or other local emergency number) immediately.** A crew with proper training and equipment will arrive as soon as possible.
6. **Accept confirmation that the system has been de-energized and is safe only from a representative of the power system who is on site.**

HAZARD ALERT

A vehicle contacted a high-voltage power line. When a police officer arrived at the scene, the vehicle was still energized. The police officer walked toward the vehicle. The officer's legs started tingling about 2 m (6 ft.) away from the vehicle. The officer was fortunate not to be seriously injured or electrocuted.

General limits of approach

The key to safety is to keep a safe distance from overhead and underground power lines. Part 19 of the Regulation lists the distances that workers must keep away from exposed energized conductors. Table 19-1A in the Regulation gives the general limits of approach. This is the *minimum* distance from overhead energized high-voltage lines that non-qualified workers and their materials, equipment, and machinery must maintain.

The limits of approach vary with the voltage. The tools and equipment that you hold or operate are an extension of your reach. You must ensure that you have enough room for movement with your tools without violating these limits.

Table 19-1A: Minimum approach distance for working close to exposed electrical equipment and conductors

Voltage, phase to phase	Minimum distance	
	Metres	Feet
Over 750 V to 75 kV	3	10
Over 75 kV to 250 kV	4.5	15
Over 250 kV to 550 kV	6	20

Table 19-1B: Minimum clearance distance for passing under exposed electrical equipment and conductors

Voltage, phase to phase	Minimum distance	
	Metres	Feet
Over 750 V to 75 kV	2	6.5
Over 75 kV to 250 kV	3	10
Over 250 kV to 550 kV	4	13

Table 19-2 in the Regulation gives adjusted limits of approach for specially trained workers. Table 19-3 gives the limits of approach for utility arborists.

The movement of equipment and tools must be carefully planned to avoid entering within the general limits of approach. Employers must accurately determine the voltage and minimum limits of approach. To do so, contact the owner of the power system. Employers must also ensure that:

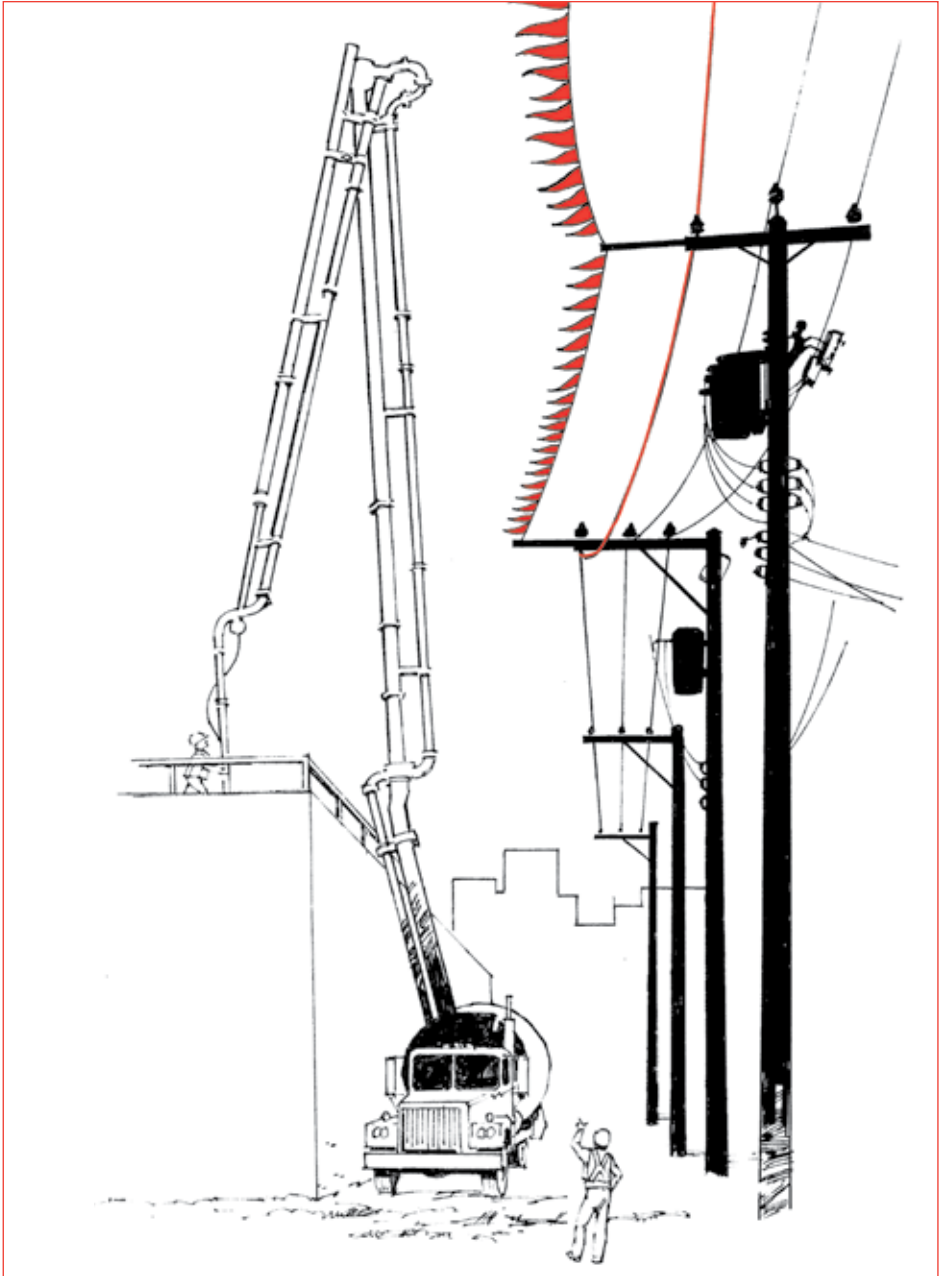
- Supervisors and workers know the location of all electrical power sources in the work area before starting work
- Supervisors review the general limits of approach with all workers who work near energized high-voltage equipment or power lines
- Supervisors hold pre-job safety meetings (tailgate meetings) and document the meetings

Supervisors and workers must maintain the minimum distance from electrical conductors at all times. The minimum distance is measured from the extreme outside dimension of mobile equipment, tools, or materials being handled. The outside dimension may be the tip of an extended equipment boom, a paint roller, or a long pipe that you are lifting. The electrical conductor may be a wire, a transformer, or any other energized component that conducts electricity. All workers need to know the safe limits of approach to electrical conductors and must not get any closer.

Working inside the limits of approach

After first checking the worksite, you may find that the minimum distance from the electrical conductor cannot be maintained. If inadvertent movement by a worker or equipment may result in either coming closer than these minimum distances, you must follow these steps before proceeding with work:

1. Call the owner of the power system and arrange for a worksite meeting to decide whether the energized electrical conductors can be:
 - Displaced or rerouted, or
 - De-energized (isolated and grounded), or
 - Visually identified and effectively guarded.
2. Get assurance in writing from the owner of the power system indicating which of the three actions will be taken and when this will be done. The owner of the power system will do this on form 30M33, available from any WorkSafeBC office or the owner of the power system. No work can be done within the limits of approach until one of the conditions in step 1 has been met and the completed form 30M33 is on site. It takes time to complete the form 30M33 process, so it's important to plan ahead.
3. Inform all workers near the power lines of the information in form 30M33. Make sure they are trained in appropriate safe work procedures.
4. Designate a qualified safety watcher who can monitor equipment and material movement and give an instant “stop” signal to the equipment operator when the equipment or load is too close to the electrical conductor. Workers, equipment, tools, and loads must not contact the guarding under any circumstances.



Guarding is a visual warning only. The grounded guard wire (with flags) gives warning of approach. The overhead line cover-up, installed by the owner of the power system, has no insulated rating for the purposes of form 30M33. Workers and equipment must not contact the guard wire or overhead line under any circumstances.

Common problem areas

The rest of Part 2 highlights areas where workers have been injured while working near high-voltage conductors. It also offers suggestions to help you prevent similar incidents and to keep you and your co-workers safe near power lines.

Construction sites near power lines

Each year workers in B.C. die or are seriously burned as a result of unsafe work practices around energized conductors. The following information is a reminder to operators of construction equipment and to construction and maintenance workers who must work near power lines:

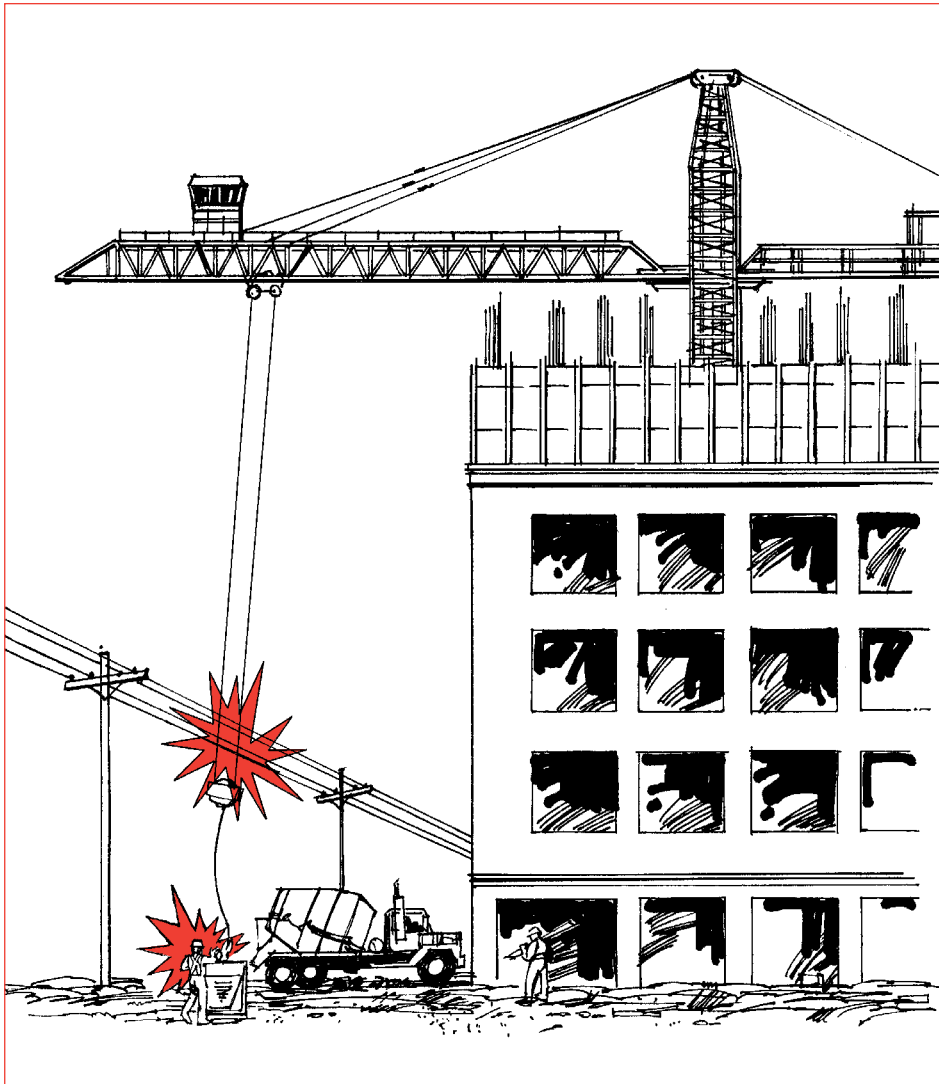
- Most power lines are found overhead; however, some are buried just a short distance below the surface of the ground.
- The normal operating range of your machine or equipment can often reach either the overhead or the underground power lines above or below you.
- Supervisors and operators of equipment can prevent electrical accidents through knowledge of electrical systems and safe work practices.

HAZARD ALERT

A tower crane operator working from the top of a high-rise building was hoisting material to different floors. The operator had completed a lift and returned the bucket to the ground loading area. While the operator was repositioning the bucket, the hoist cable slackened excessively and crossed over a 12 kV (12,000 V) power line, energizing the hoist cable. Fortunately, no one was injured in this near miss.

Recertifying equipment after electrical contact

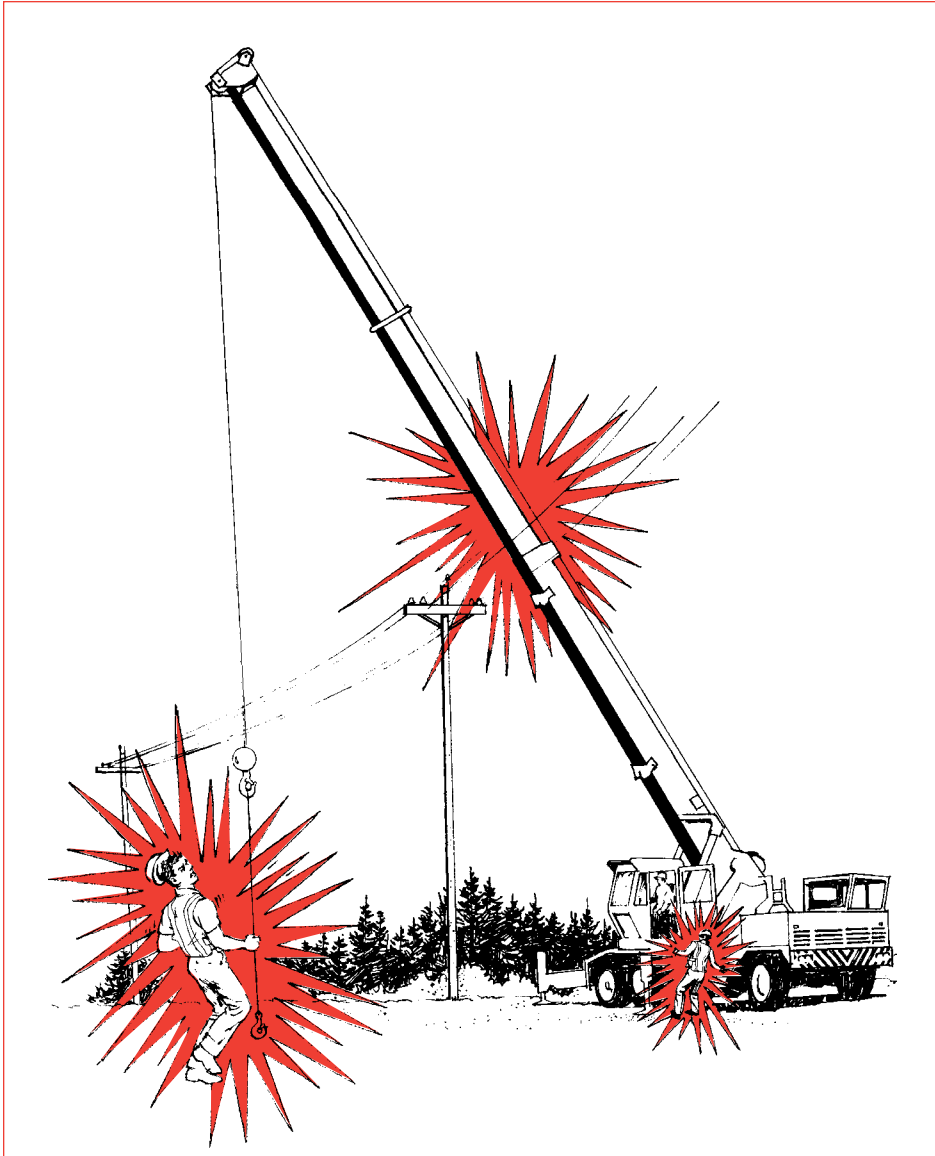
When a machine contacts a power line, the passage of current through the machine can impair the strength of some of its parts. Any hoisting or aerial device that has contacted an energized conductor must be recertified by a professional engineer before it is returned to service. It is recommended that a licensed mechanic check other mobile equipment that has contacted a power line.



Serious injuries or death can result if any part of a crane touches a power line.

Mobile equipment near power lines

Operators of mobile equipment such as cranes, hoists, and backhoes must take care that no part of the equipment makes contact with an overhead power line. If any part of the equipment contacts an overhead power line, remember that the operator is safer inside the machine than on the ground (see page 30).



If mobile equipment touches a power line, electricity can travel from the power line to a worker touching any part of the equipment, including a pendant control.

HAZARD ALERT

A worker was on the ground guiding a mobile crane onto a truck deck when the crane's boom contacted a power line. The electrical current passed through the crane jib that the worker was holding and then passed through the worker to the ground. The worker was electrocuted.

In another accident, a pumper truck operator was lowering the truck's boom after pouring concrete. He was standing away from the truck using the pendant control. The boom contacted the high-voltage line and power came through the pendant line to the operator. The operator was electrocuted.

If you operate mobile equipment near power lines, take the following precautions:

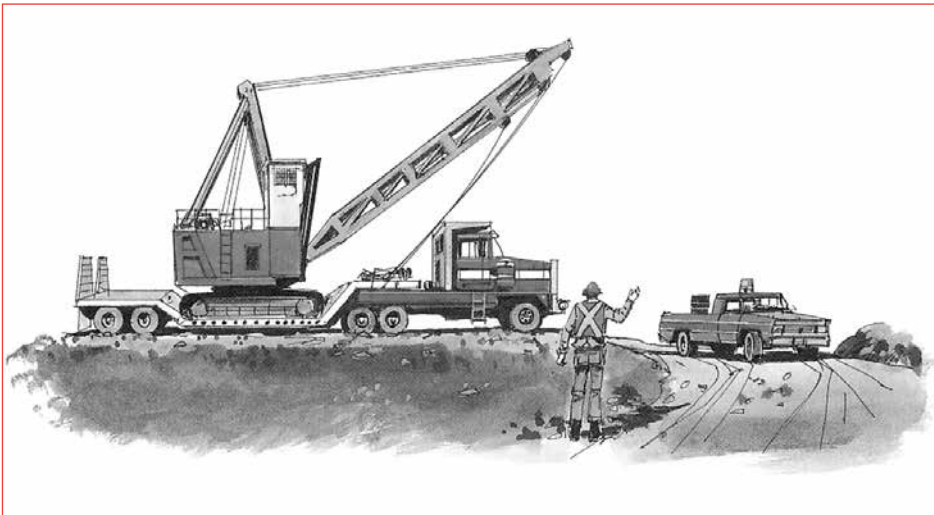
- Keep your mobile equipment, work materials, and tools a safe distance from power lines. This is your first line of defence when operating mobile equipment near overhead power lines.
- If it is necessary to operate equipment closer than 6 m (20 ft.) to a power line, contact the owner of the power system to find out the voltage of the line. Then consult the table on page 32 to find the minimum distance away from the line you are allowed to work. If it is not possible to keep this distance, the owner of the power system may need to de-energize or reroute the circuit, or provide guarding. Don't proceed until the owner of the power system has given written assurance defining proper safeguards.
- Don't stand on the ground beside your machine to operate the remote controls for the equipment. If a power line contact occurs, current will flow through the machine to the ground. If your feet are on the ground and you touch the electrified machine, current will pass through your body to the ground. An electrical contact will also energize the ground around the machine for some distance, up to at least 10 m (33 ft.) — more if the lines carry voltages higher than 60 kV (60,000 V).
- If you must operate controls from the ground, the remote control signal should be carried by radio or non-conductive cable such as fibre optics. If the fibre optic cable has armouring with metal bands, it will be conductive. In addition, you should stand well clear when operating equipment with a remote control — depending on the voltage, at least 10 m (33 ft.) away from your machine and the power lines.

Travelling under power lines

Know the height of your load and the height of the power lines you will be travelling under. Always make sure there is sufficient clearance for your load to travel safely under the power lines.

HAZARD ALERT

A skidder was towing a line log loader down a road alongside a power line. While the skidder operator was manoeuvring out of a small turnout, the snorkel guyline contacted the power line. Both machines were energized. Although two workers tried to signal to the skidder operator to stay in the vehicle, he jumped to the ground while still touching the energized skidder and was electrocuted.



The boom of the grapple yarder has been lowered for transport.

Pruning or falling trees near power lines

Workers have been killed or injured when doing tree care work or falling trees near power lines. Before workers prune or fall trees close to a power line, a qualified person must inspect the worksite to identify any hazards, including situations where any part of a tree is within the general limits of approach or could fall within that distance. The owner of the power system must authorize the person doing the inspection and ensure that the person is qualified.

If tree pruning or falling will come within the general limits of approach, workers must be authorized by the owner of the power system to do the work. Normally the only worker authorized to do this work will be a qualified electrical worker, a certified utility arborist, or an apprentice utility arborist working under the direct supervision of a certified utility arborist or a qualified electrical worker.

Tree pruning or falling is not allowed within the general limits of approach unless both of the following are true:

- A certified utility arborist or qualified electrical worker is present at the site and directing the work.
- At least one additional qualified person, trained in appropriate emergency rescue, is present.

For more information on tree pruning and falling near power lines, see the following:

- Sections 19.30–19.35 of the Regulation
- *Safe Work Practices for Certified Utility Arborists* (WorkSafeBC publication)

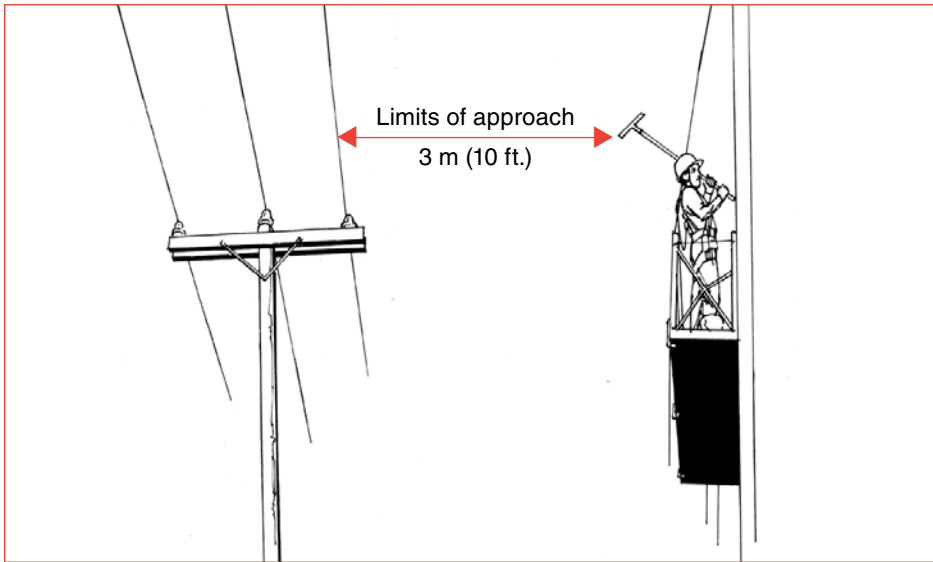
HAZARD ALERT

A tree trimmer was up in a tree trimming branches about 2.5 m (8 ft.) away from a power line. When he cut a tree branch, it fell onto the power line and the other end hung against the trunk of the tree. The worker received a fatal shock when he tried to free the branch from the tree.

Scaffolds and other equipment near power lines

The limits of approach must be maintained for all scaffolds and equipment near power lines. For example, workers on scaffolds or window-washing platforms must not let any tools, such as pipes or rollers, come within the limits of approach. Scaffolds must be positioned and secured in a manner to prevent them from coming into contact with adjacent power lines.

Farm equipment can cause accidents when it contacts power lines. Farm workers have been electrocuted when metal irrigation pipes have been lifted up, touching overhead power lines. Where practicable, store metal irrigation pipes at least 30 m (100 ft.) away from overhead power lines.



A tool is an extension of your reach and must not come within the limits of approach.

HAZARD ALERT

A construction worker was erecting tubular scaffolding 3 m (10 ft.) from an energized 25 kV (25,000 V) conductor. The worker was handling a long section of bracing, which accidentally contacted the power line. The worker was electrocuted.

Utility poles

Don't work close to utility poles if the work could cause a pole to become unstable or if you can't maintain the limits of approach. If any poles are unstable, ask the owner of the power system to support or remove them. Workers must not climb poles supporting power lines unless they are qualified and authorized by the owner of the utility.

HAZARD ALERT

A worker was excavating a trench beside a utility pole. The pole was undermined when too much soil was removed next to the pole. The pole fell over, causing high-voltage lines to fall near the worker. Fortunately, the worker was not injured.

Underground utilities

Low-voltage and high-voltage underground wiring is used for supplying power to schools, commercial buildings, homes, and numerous other sites. Drilling, excavating, or probing can be dangerous near buried electrical lines. Check with the owner of the power system for the existence and location of underground lines before you start digging.

Workers have died because their shovel blade penetrated a live high-voltage electrical cable. A treated-wood plank buried on top of the cable may be the only protection for the cable. Modern installations often have a bright yellow plastic ribbon buried below the surface to warn that a cable lies beneath it. "Danger — High Voltage" signs warn that high-voltage equipment is enclosed inside and buried underground. Don't take chances — contact the owner of the power system before you start digging. You must accurately identify the location of underground utilities before you dig.

Besides electricity, there are other kinds of underground utilities, including telephone, gas, cable, water, and pipeline services. Some of these service providers belong to BC One Call. You can call 1.800.474.6886, or *6886 on your cell, to find out which utilities are members and the location of their underground cables and pipes. Only a few power systems are members, but more are joining. If a utility is not a member of BC One Call, you will need to contact the owner directly to determine the location of underground utilities.



Find out the locations of any underground cables before you begin work.

The following activities are potentially hazardous because workers may contact buried power lines:

- Driving ground rods or any other long metal objects into the ground
- Digging holes for fence posts
- Digging near “Danger — High Voltage” signs
- Trenching

HAZARD ALERT

A worker was breaking concrete when his jackhammer broke through a conduit. The tool contacted an energized 15 kV (15,000 V) underground cable. The worker was electrocuted.

3 keys of electrical safety

1. Look up and down.

All workers who operate machinery or equipment that could come in contact with power lines should look up and check for overhead power lines before beginning work or identify underground power lines in the vicinity. Plan your work to prevent electrical contact.

2. Keep back — Know your limits.

When operating machinery or equipment in close proximity to power lines, always maintain the limits of approach: 3–6 m (10–20 ft.), depending on the voltage. Use a spotter to make sure you keep equipment away from power lines.

For proper safe working distances, see the table on page 32, or contact the owner of the power system or WorkSafeBC. Where any portion of a machine or equipment may come closer than the minimum distance prescribed, form 30M33 must be completed before work begins. This allows the owner of the power system to provide some form of protection.

On the ground stay at least 10 m (33 ft.) away from operating equipment because if it contacts an energized line the electricity will go to ground. The operator should be on the vehicle with everyone else clear of the vehicle when the boom is in motion. If you must approach, ensure the equipment is not operating.

3. Stay back, and call for help.

Stay back at least 10 m (33 ft.) from a fallen power line, exposed underground power line, or any object in contact with the line. If the machinery you are operating contacts an energized line, move it away from the line to break contact. If you can't do this, stay put in the machine until help arrives.

If it's a life-threatening situation such as a fire, jump clear of the machine, keeping your feet together. Never contact the machine and the ground at the same time. Once clear of the machine, shuffle away, never allowing the heel of one foot to move beyond the toe of the other. Keep shuffling until you are at least 10 m (33 ft.) away from the machine; this is the safe distance for voltages up to and including 60kV (60,000 V). Depending on the voltage, you may need to get as much as 32 m (105 ft.) away from the machine.

Always call your local emergency services when someone is injured in an electrical accident. Don't attempt a rescue until directed by BC Hydro personnel. If you touch an injured person who is still in contact with an electrical source, you could be seriously injured or killed. Keep everyone back at least 10 m (33 ft.), and have someone call for help immediately.

In case of electrical contact

Is there an immediate threat to life or a fire?

- Yes — Call 911. They will contact BC Hydro to shut off the power.
- No — Call 1.888.POWERON (769.3766), or *49376 on your cell, to have BC Hydro shut off the power.

Plan ahead to prevent an accident.

Take electrical safety training. For more information, visit www.bchydro.com/safety.

For information on overhead power line voltage or to complete WorkSafeBC form 30M33, call the BC Hydro Electric Service Coordination Centre at 1.877.520.1355.

Before you dig, call BC One Call at 1.800.474.6886, or *6886 on your cell. Before digging or drilling, you must accurately determine the location of all underground services in the area.

If a cable is accidentally dug up, call the power utility immediately. Move the digger bucket clear of the cable and stay out of the trench. If the machine can't be moved, keep workers 10 m (33 ft.) away, and make sure the operator remains on the vehicle. If the operator must leave the vehicle because of fire, make sure the operator follows the "Shuffle, Don't Step" rule.

A red-tinted photograph of an electrical worker lying on a rooftop, holding a wire, with a large red number 3 overlaid.

3

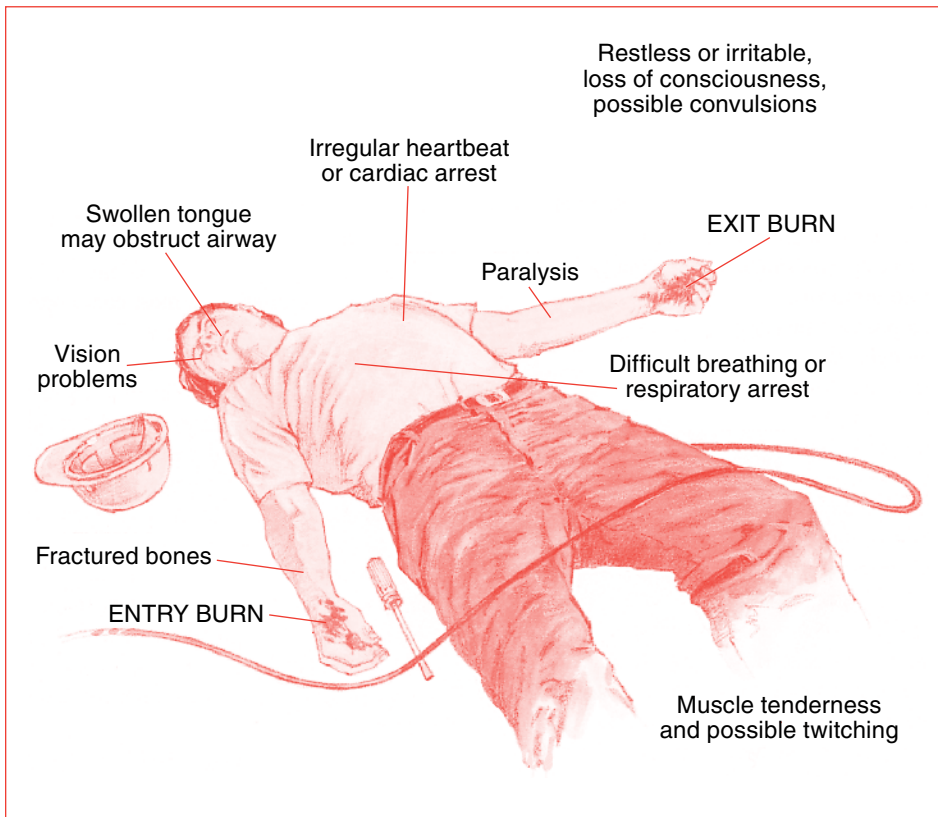
Electrical Injuries

Types of electrical injuries

Electrical injury is a term for all injuries caused by contact with electrical energy. Electrical contact can cause a wide variety of injuries involving most organ systems. Most electrical injuries are classified as one of the following:

- Burns
- Electric shock injuries
- Eye injuries

As well as these injuries directly related to the electrical accident, a worker could be thrown or fall if working at a height. As a result, the worker may also have fractures, spinal injuries, or internal injuries.



A worker with an electrical injury may have a number of signs and symptoms.

Burns

Burns are the most common electrical injury. An injured worker may have one or more types of burns:

- **Flash burns** are caused by heat released when an arc is formed between the electrical source and a ground or between two electrical conductors. In this case, the arc does not pass through the body. However, electric arcs can produce intense heat (several thousand degrees) — more than enough to melt steel. This heat can cause first-degree through third-degree burns to any part of the worker exposed to the heat. Electric arcs can also generate intense ultraviolet radiation and cause serious eye injury, even at a distance.
- **Arcing burns** occur when electrical current jumps from the current source to the worker or from one part of a body surface to another.
- **Flame burns** caused by the ignition of clothing are common, particularly with high-voltage exposure.
- **Contact burns** occur when skin touches hot surfaces of overheated electrical conductors or other equipment.
- **Electrical burns** are the result of electrical current flowing through tissues or bone. The burn is often only visible at entrance and exit wounds, with the major damage inside the body. Extensive damage to nerves, blood vessels, muscles, and organs may take place as the current passes through the body and generates intense heat (up to 3,000°C).

Electric shock

Electric shock is caused by electric current passing through the body. Electric shock symptoms can range from a barely perceptible tingle to immediate heart stoppage. In addition to the electrical burn injuries discussed on page 50, there may be internal bleeding, unconsciousness, respiratory paralysis, and cardiac disorders.

Electrical current can cause involuntary muscle contractions. These may prevent an injured worker from letting go of the live conductor. Sometimes involuntary movements lead to bruises or bone fractures — or even death from collisions or falls.

In some cases, electric shock can cause injuries that are not evident and symptoms may be delayed. For this reason, all electric shock victims should be taken to hospital for observation.

The damage that electricity does to the body is determined by three major factors:

- The rate of current flow (measured in amperes, and determined by voltage and resistance)
- The path of the current through the body
- The length of time the current is flowing through the body

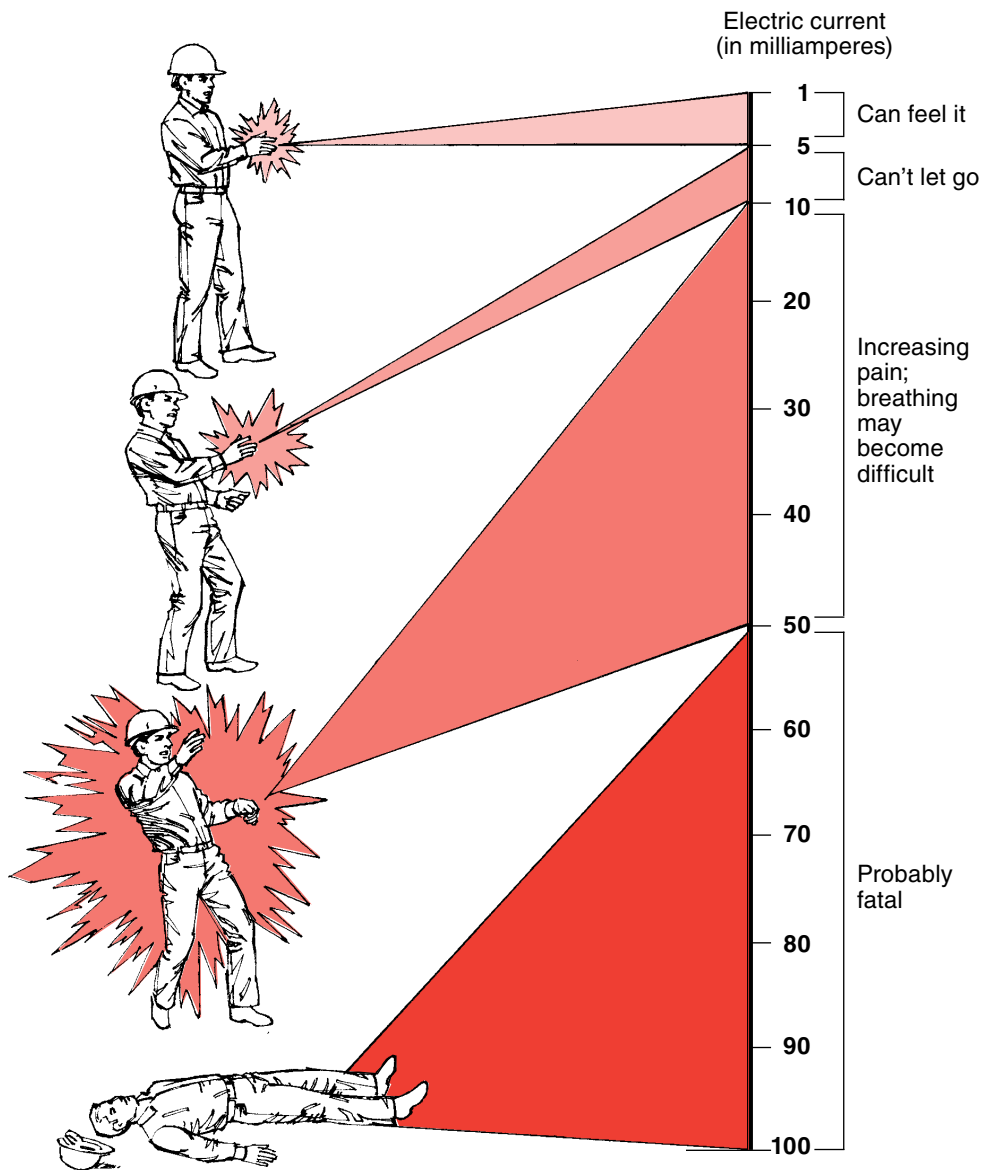
Other factors that may affect severity of injuries from electric shock are:

- The frequency of current (for example, 60 cycles)
- The type of current (AC or DC)
- The phase of the heart cycle when the shock occurs
- The general health of the person receiving the shock

It is not possible to say exactly what injuries will occur from any given amperage. The table on page 52 shows the general relationship between the degree of injury and the amount of current flowing through a person in a hand-to-foot path for just a few seconds. Current that is strong enough to run a 5- or 10-watt light bulb can kill you. Low voltages can be extremely dangerous.

As shown on page 52, a difference of less than 50 mA (milliamperes) exists between a current that is barely perceptible and one that can kill. The degree of injury is proportional to the length of time the body is in the electrical circuit. The longer you're exposed to the current, the more serious the shock. **Low voltage does not mean low hazard.**

Range of body tolerance



A 100-watt light bulb uses 1000 mA of current. It takes only 5 mA to trip a ground fault circuit interrupter (GFCI). A small amount of current running through the body for a few seconds can give the effects shown in the table.

Eye injuries

Like any other part of your body, your eyes can be burned. Regular safety glasses may not protect against flash burns from electric arcs. Direct or reflected light from an electric arc may cause a surface burn to the cornea. Although flash burns are very uncomfortable, most of those caused by shorter flashes are not serious and usually heal in 12 to 24 hours. With longer flashes of a couple of seconds, permanent retinal damage may occur from the ultraviolet light.

If there is a fire, the eyelids are frequently burned. The treatment of burned eyelids requires specialized medical care. The eyes should not be examined as this may injure the burned tissue. Both eyes should be covered with sterile dressings.

First aid

Electric shock and electrical burns are serious injuries and should receive immediate medical attention. Contact your first aid attendant, if available, or get other medical help. Arrange for transport to hospital immediately.

Make sure you keep yourself and the injured worker out of further danger:

- With **low voltage**, carefully remove the source of contact from the injured worker without endangering yourself. Turn off the power or use insulated material to remove the source of contact (low-voltage only).
- With **high voltage**, stay back at least 10 m (33 ft.) until the owner of the power system says it is safe to approach. Don't become a second victim. If the voltage is over 60 kV (60,000 V), you may need to keep as far away as 32 m (105 ft.). See page 31 for more information on rescue work around power lines.

First aid for electrical injuries includes the following:

1. Remove the worker from the heat and put out the fire on any clothing by smothering the flames with a blanket or dousing the worker with water. Make sure that fabric is no longer smouldering. Cooling more than 20% of the body at one time can cause hypothermia. Wet dressings and any clean source of water may be used for cooling. *Never* apply ice.
2. Initiate priority action following the ABC approach:
 - Airway — Establish and maintain an open airway.
 - Breathing — Check and maintain breathing. If the injured worker is not breathing, start assisted ventilation, using mouth-to-mouth or a pocket mask.
 - Circulation — Monitor the worker's circulation constantly. Start cardiopulmonary resuscitation (CPR) if necessary, and carry on until more advanced life support is obtained. Electrical workers should be familiar with CPR.
3. Keep the injured worker warm and at rest.
4. If the injured worker is conscious, offer reassurance.
5. If the injured worker vomits, turn the worker onto one side to keep the airway clear.

6. Transport the injured worker to medical aid. While waiting for transport or en route to medical aid, administer first aid for burns.
7. Don't leave injured workers unattended. Maintain a constant watch on their airway, breathing, and circulation while they are transported to medical aid.

First aid for burns

First aid for burns can be administered while the injured worker is waiting for transport or being transported to medical aid:

- Remove rings, wrist watches, and footwear, if possible.
- Elevate burned extremities, if possible, to decrease fluid loss. Don't splint burned limbs unless there is an obvious fracture or dislocation. Avoid handling the affected body parts unnecessarily.
- Apply wet dressings on burns to less than 20% of the body surface. Any burns in excess of 20% can be covered with dry dressings or clean sheets. Don't apply tight, encircling dressings.
- Don't break blisters.
- Don't apply creams, ointments, or other medications to the burned area.
- Don't examine burned eyelids. Cover them with sterile dressings until they can receive specialized treatment.

Notes

This image shows a single sheet of white paper with horizontal ruling lines. The lines are evenly spaced and run across the width of the page. There are no margins, text, or other markings on the paper.

Notes

[illegible]

Notes

[illegible]

WorkSafeBC offices

Visit our website at worksafebc.com.

Abbotsford

2774 Trethewey Street V2T 3R1
Phone 604.276.3100
1.800.292.2219
Fax 604.556.2077

Burnaby

450 – 6450 Roberts Street V5G 4E1
Phone 604.276.3100
1.888.621.7233
Fax 604.232.5950

Coquitlam

104 – 3020 Lincoln Avenue V3B 6B4
Phone 604.276.3100
1.888.967.5377
Fax 604.232.1946

Courtenay

801 30th Street V9N 8G6
Phone 250.334.8765
1.800.663.7921
Fax 250.334.8757

Kamloops

321 Battle Street V2C 6P1
Phone 250.371.6003
1.800.663.3935
Fax 250.371.6031

Kelowna

110 – 2045 Enterprise Way V1Y 9T5
Phone 250.717.4313
1.888.922.4466
Fax 250.717.4380

Nanaimo

4980 Wills Road V9T 6C6
Phone 250.751.8040
1.800.663.7382
Fax 250.751.8046

Nelson

524 Kootenay Street V1L 6B4
Phone 250.352.2824
1.800.663.4962
Fax 250.352.1816

North Vancouver

400 – 224 Esplanade Ave. W. V7M 1A4
Phone 604.276.3100
1.888.875.6999
Fax 604.232.1558

Prince George

1066 Vancouver Street V2L 5M4
Phone 250.561.3700
1.800.663.6623
Fax 250.561.3710

Surrey

100 – 5500 152 Street V3S 5J9
Phone 604.276.3100
1.888.621.7233
Fax 604.232.7077

Terrace

4450 Lakelse Avenue V8G 1P2
Phone 250.615.6605
1.800.663.3871
Fax 250.615.6633

Victoria

4514 Chatterton Way V8X 5H2
Phone 250.881.3418
1.800.663.7593
Fax 250.881.3482

Head Office / Richmond

Prevention Information Line:
Phone 604.276.3100
1.888.621.7233 (621.SAFE)

Administration:

6951 Westminster Highway
Phone 604.273.2266

Mailing Address:

PO Box 5350 Stn Terminal
Vancouver BC V6B 5L5

After hours health & safety emergency

604.273.7711
1.866.922.4357 (WCB.HELP)



R10/14



Printed in Canada



BK19